

Versatile, precise
and powerful

Including the
next generation of
innovations



DIE-CUTTING | FOLDING CARTON

EXPERTCUT 106 LER | PER

At a glance

Empowering flexibility

BOBST

A machine which offers unrivalled versatility, superb productivity, easy operation and unbeatable product quality, giving you a real competitive advantage. A more flexible, precise and powerful register system and full sheet delivery make this an even better **EXPERTCUT**.

EXPERTCUT 106 LER | PER

- > At a glance
- > Packaging market
- > Benefits and features
 - > 1-3
 - > 4-6
 - > BOBST technology
- > Specifications 
 - > Measurements
 - > Technical information
- > Related products
- > Services
 - > General services
 - > BOBST Connect
 - > ToolLink
 - > Digital Inspection Table
 - > Tooling




Fast and **flexible**

Superb blanks
ready for the next step

Cost-effective
ergonomics

[> WATCH VIDEO](#)

[REQUEST CONSULTING](#)

 [Print responsibly](#)

Data is not binding.
Non-contractual pictures.
The manufacturer reserves the right to make modifications without notice.
© BOBST SA 2024
BUPC-ECT106-102024

Page 2/19

Maximising efficiency

With the ambition to improve setup times and production efficiency, the **EXPERTCUT 106** is now equipped with the latest innovations for BOBST die-cutters. Pushing connectivity, digitalization and automation, sustainability is another pillar of the BOBST vision which has been the focus for change. With a set of brand-new BOBST technologies, the EXPERTCUT 106 offers next-level die-cutting for folding carton converters.



[> FIND OUT MORE](#)

EXPERTCUT 106 LER | PER

- > At a glance
- > Packaging market
- > Benefits and features
 - > 1-3
 - > 4-6
 - > BOBST technology
- > Specifications
 - > Measurements
 - > Technical information
- > Related products
- > Services
 - > General services
 - > BOBST Connect
 - > TooLink
 - > Digital Inspection Table
 - > Tooling



Impressive productivity

Die-cuts a range of substrates, from paper to corrugated board, at speeds up to 9,500 s/h



Resource efficiency

More sustainable and cost-efficient converting with POWER REGISTER Plus and the Pack Energy Efficiency



Impeccable quality

Perfect register with POWER REGISTER (PER), inline quality control scan and sample device for effortless quality control



Speedy changeovers

15 minutes less setting time with SPEED CHANGE and drastically reduced patching with ACCUPLATEN



Consistency and continuity

Automated labeling and identification of first/last sheets and inflatable non-stop bars for smooth, non-stop production with high-quality sheets

 Print responsibly

Data is not binding. Non-contractual pictures. The manufacturer reserves the right to make modifications without notice. © BOBST SA 2024 BUC-ECT106-102024

Creating value

BOBST innovations
are driven by customer
and brand owner needs.

> READ MORE

Functional packaging and protection

Protecting the goods in a clever way is required. Single serve, multi-packs, re-sealable, see-through.

Customization, versioning, personalization

Packaging needs to reach all segments of the society taking almost any shape and size from very short runs to reprint and long runs. All with the best color consistency.

E-commerce & omni-channels

Multiple retail formats set new requirements for packaging. On-demand production, timely delivery across multiple designs, shapes and sizes.

Sustainability

Packaging production needs to reduce its environmental carbon footprint – less waste across the entire supply chain. New and thinner substrates. Recycling and re-use are the new rules.

Faster time-to-market

A growing number of products need to reach consumers faster. Product lifetime is shorter. From product design to the consumer experience, the supply chain has to be more agile.



EXPERTCUT 106 LER | PER

- > At a glance
- > Packaging market
- > Benefits and features
 - > 1-3
 - > 4-6
 - > BOBST technology
- > Specifications
 - > Measurements
 - > Technical information
- > Related products
- > Services
 - > General services
 - > BOBST Connect
 - > TooLink
 - > Digital Inspection Table
 - > Tooling

Print responsibly

Data is not binding.
Non-contractual pictures.
The manufacturer reserves
the right to make
modifications without notice.
© BOBST SA 2024
BUPC-ECT106-102024



Perfect sheet feeding

SMART FEEDER

- Non-stop feeder for continuous production while changing piles
- Movable gangway puts adjustment elements within easy reach
- Continuous and stable sheet feeding with perfect material positioning and flow
- "Stop & Go" starts up feeding immediately at full speed
- Additional technologies enable flexible pallet and improved quality management



Fewer stops
better quality

POWER REGISTER (PER)

- "No sheet-edge contact" system reducing feed related stops
- Brings each sheet into perfect cut-to-print register
- > POWER REGISTER Plus reduces carton cost by up to 0.5%

Optical lateral register (LER)

- Lateral camera identifies sheet edge or print for automatic centering of every sheet



Smoothest transport

Double cam gripper bar advance

- Double cam gripper bar advance accelerates and decelerates sheets in the smoothest way possible
- Allows handling of the lightest materials with a minimum number of nicks
- Smaller nicks needed to achieve impeccable finished product quality
- Long-lasting carbon gripper bars allow higher production speeds

EXPERTCUT 106 LER | PER

- > At a glance
- > Packaging market
- > Benefits and features
 - > 1-3
 - > 4-6
 - > BOBST technology
- > Specifications
 - > Measurements
 - > Technical information
- > Related products
- > Services
 - > General services
 - > BOBST Connect
 - > ToolLink
 - > Digital Inspection Table
 - > Tooling

 Print responsibly

Data is not binding.
Non-contractual pictures.
The manufacturer reserves
the right to make
modifications without notice.
© BOBST SA 2024
BUPC-ECT106-102024



User friendly

HMI SPHERE

- Controlled by the advanced BOBST Human Machine Interface (HMI)
- Large 22" full color, high-definition touch screen
- All settings appear on one screen for more convenient and intuitive navigation
- Can store up to 5,000 job set-ups to minimize setting time
- Fully compatible with current and future BOBST Connect functions



Precision and speed

In-line stripping and blanking

- Perfect stripping at highest speeds
- Centerline® and Quick Lock for precise tool positioning
- Full-sheet delivery and automatic sheet inserter
- Angle Lock blanking ensures more precision and optimized performance
- Possibility of inline quality control ensuring 100% waste-free and complete blank piles



Effortless delivery

Precision and quality

- Removal and automatic evacuation of front waste
- Fully automated pallet changing, tie-sheet insertion and control of the pile compression and height for continuous production

EXPERTCUT 106 LER | PER

- > At a glance
- > Packaging market
- > Benefits and features
 - > 1-3
 - > 4-6
 - > BOBST technology
- > Specifications
 - > Measurements
 - > Technical information
- > Related products
- > Services
 - > General services
 - > BOBST Connect
 - > ToolLink
 - > Digital Inspection Table
 - > Tooling

 Print responsibly

Data is not binding.
Non-contractual pictures.
The manufacturer reserves the right to make modifications without notice.
© BOBST SA 2024
BUPC-ECT106-102024

Make the **difference**

Push the boundaries of productivity, reduce your production footprint and ensure perfect quality with BOBST technology.

More uptime

- > SPEED CHANGE includes a range of features which help reduce setup time by up to 20%
- > ACCUPLATEN is a revolutionary platen that minimizes deformation, cutting down patching time by up to 80%
- Equipments such as the > FLEXRACK and the > HYBRIDBLANKER simplify setup
- Automatical adjustment of the fine cutting plate through the HMI
- The > inflatable non-stop bars prevent jams at the feeder
- Fully integrated BOBST logistics system for seamless pallet transport

Cost-efficient and sustainable

- The > Pack Energy Efficiency regroups innovations and systems which can considerably cut down energy consumption
- Cut down carton consumption with space-saving register marks, using > POWER REGISTER Plus

- > High Performance Tooling, preventive maintenance and operator training ensure equipment longevity, productivity and operator safety
- Comprehensive production data through > BOBST Connect helps increase production efficiency

Zero-fault quality

- Stripping control tool for > high-definition inline quality control, ensuring perfect blank piles
- Automated collection of a sample sheet with the > sampling device
- > Automatic labelling and identification of the first and last sheets in the pile, ensures die-cutting of top-quality sheets
- > Digital Inspection Table for pre-press or production quality checks



EXPERTCUT 106 LER | PER

- > At a glance
- > Packaging market
- > Benefits and features
 - > 1-3
 - > 4-6
 - > BOBST technology
- > Specifications
 - > Measurements
 - > Technical information
- > Related products
- > Services
 - > General services
 - > BOBST Connect
 - > TooLink
 - > Digital Inspection Table
 - > Tooling

 Print responsibly

Data is not binding.
Non-contractual pictures.
The manufacturer reserves the right to make modifications without notice.
© BOBST SA 2024
BUPC-ECT106-102024



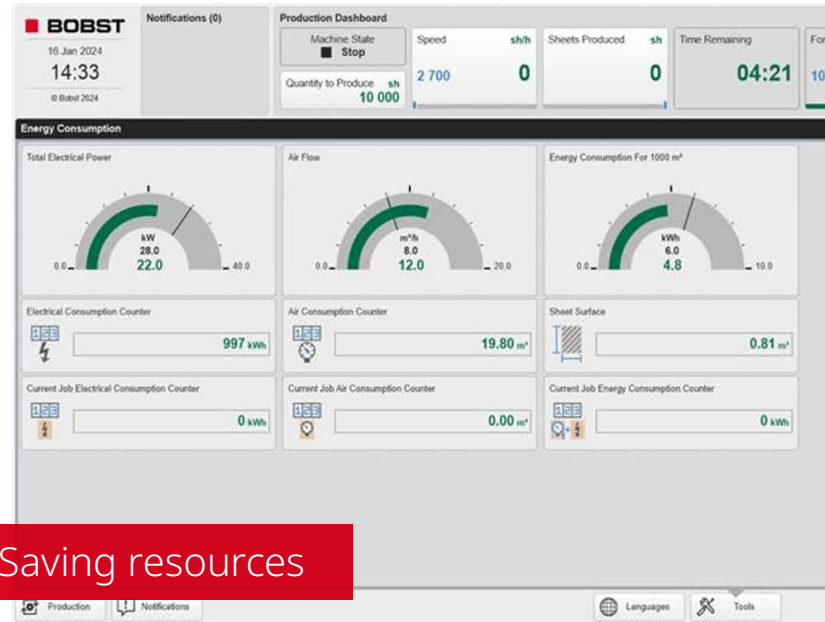
Shorter setups

SPEED CHANGE

Set of features which increase connectivity, automation and ergonomics:

- > TooLink for immediate recognition of the job recipe and corresponding tool positioning
- Pre-selected HMI SPHERE settings according to factory standards
- Additional screen at the feeder for improved ergonomics
- Automatic pallet lifting for new jobs
- A series of simplified and automated setup functions

The measures greatly increase operator-friendliness and reduce the setup time by 15 minutes.



Saving resources

Pack Energy Efficiency

Reduces energy consumption to drive cost-efficiency and sustainability:

- Automatic motor and pump stop when not used
- Air pumps using less energy for the same air volume
- Redesigned air flow for Bernoulli, for same performance with reduced air consumption
- Energy Recovery System transforms kinetic braking energy into electricity
- Optimized binder sheet inserter using less energy
- Energy Monitoring indicators for live consumption control

These features cut down energy consumption by up to 20%.

EXPERTCUT 106 LER | PER

- > At a glance
- > Packaging market
- > Benefits and features
 - > 1-3
 - > 4-6
 - > BOBST technology
- > Specifications
 - > Measurements
 - > Technical information
- > Related products
- > Services
 - > General services
 - > BOBST Connect
 - > TooLink
 - > Digital Inspection Table
 - > Tooling

Print responsibly

Data is not binding. Non-contractual pictures. The manufacturer reserves the right to make modifications without notice. © BOBST SA 2024 BUPC-ECT106-102024

Benefits and features: BOBST technology



Less patching

ACCUPLATEN

- Redesigned platen compensates pressure irregularities to limit the need for patching
- Patching time can be reduced by up to 80%, for reduced workload and more uptime
- Increases tool longevity and reduces waste during setup



Driving cost-efficiency

POWER REGISTER Plus

- Adapted POWER REGISTER reads two small rectangular register marks at the lateral sheet edge
- The system saves up to 4 mm carton for the front register marks
- Allows to cut down the sheet size, for increased cost-efficiency and sustainability



Perfect blank piles

High-definition inline quality control

- A full-length control scan between the stripping and the blanking stations checks every sheet
- Remaining stripping waste or missing blanks are detected, generating an immediate error message or machine stop
- Reduces operator workload and improves the quality of the finished blank pile, increasing downstream process efficiency



Boosting speed

Carbon fiber gripper bars

- The machine can be equipped with newly-developed carbon fibre gripper bars
- The bars provide extreme stability, ensuring smooth and precise sheet transport
- Allow the increase the machine speed up to 9,500 sheets per hour with SPEED PLUS

EXPERTCUT 106 LER | PER

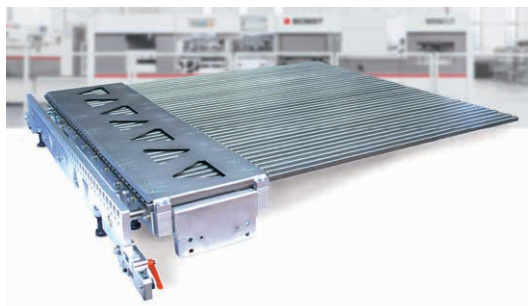
- > At a glance
- > Packaging market
- > Benefits and features
 - > 1-3
 - > 4-6
 - > BOBST technology
- > Specifications
 - > Measurements
 - > Technical information
- > Related products
- > Services
 - > General services
 - > BOBST Connect
 - > TooLink
 - > Digital Inspection Table
 - > Tooling

Benefits and features: BOBST technology



Motorized supporting plate

The setup of the fine cutting plate can now be done through the HMI, avoiding manual intervention on the machine, making the process faster and more precise.



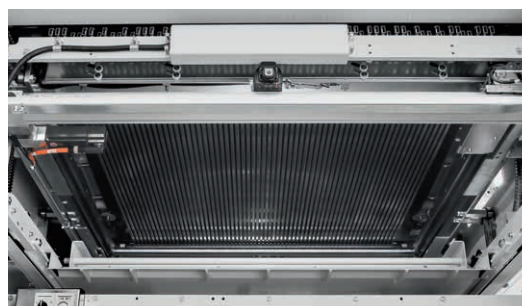
FLEX RACK

Fast and flexible setup of non-stop bars. Remarkable savings for every single order. Suitable for different layouts and optimal support of even very small blanks.



Inflatable automatic non-stop bar

Inflation of the side bars slightly lifts the pile, reducing the friction caused by the removal of the bars. Avoids sheet damage and machines stops, especially with sticky surfaces.



SMART RACK

After the insertion of the lower blanking tool, the position of the joggers is automatically detected and the required swords of the non-stop rack are locked.



Automatic labelling and identification of the first and last sheet

The first and last sheets in the pile are automatically labelled at the feeder and ejected at the reception. No operator intervention needed.



HYBRIDBLANKER/EASYBLANKER

3 in 1 frame which supports blanking tools, cuts the gripper bar front waste and delivers full sheets. Improves ergonomics, reduces the lower blanking tool price and simplifies storage logistics.

EXPERTCUT 106 LER | PER

- > At a glance
- > Packaging market
- > Benefits and features
 - > 1-3
 - > 4-6
 - > BOBST technology
- > Specifications
 - > Measurements
 - > Technical information
- > Related products
- > Services
 - > General services
 - > BOBST Connect
 - > ToolLink
 - > Digital Inspection Table
 - > Tooling

 Print responsibly

Data is not binding.
Non-contractual pictures.
The manufacturer reserves the right to make modifications without notice.
© BOBST SA 2024
BUPC-ECT106-102024

Related products



BOBST Automatic pile transfer (APT)

This system offers solutions adaptable to different production workflows. It optimizes the material flow by continuously supplying full pallets to the feeder and empty pallets at the delivery.



Easytransfer & Shuttle racks

SHUTTLE RACKS simplify the transfer of tools which are then lifted to the machine platform with EASYTRANSFER, reducing manual handling and making the operator's job safer and more efficient.



Sampling device

This ingenious device delivers a sample sheet during production. This allows a permanent quality control without stopping the machine, for full productivity and impeccable finished product quality.



Chase Changer

This pivoting presetting table allows you to prepare a second job during production, cutting on-machine makeready time to one minute.

EXPERTCUT 106 LER | PER

- > At a glance
- > Packaging market
- > Benefits and features
 - > 1-3
 - > 4-6
 - > BOBST technology
- > Specifications
 - > Measurements
 - > Technical information
- > Related products
- > Services
 - > General services
 - > BOBST Connect
 - > TooLink
 - > Digital Inspection Table
 - > Tooling

 Print responsibly

Data is not binding.
Non-contractual pictures.
The manufacturer reserves the right to make modifications without notice.
© BOBST SA 2024
BUPC-ECT106-102024



EXPERTCUT 106 LER | PER

- > At a glance
- > Packaging market
- > Benefits and features
 - > 1-3
 - > 4-6
 - > BOBST technology
- > Specifications
 - > Measurements
 - > Technical information
- > Related products
- > Services
 - > General services
 - > BOBST Connect
 - > TooLink
 - > Digital Inspection Table
 - > Tooling

1	2.80 m	9.18 ft*
2	5.90 m	19.35 ft*
3	8.70 m	28.54 ft*

*Values may vary according to the configuration.

Print responsibly

Data is not binding.
 Non-contractual pictures.
 The manufacturer reserves the right to make modifications without notice.
 © BOBST SA 2024
 BUPC-ECT106-102024

Convertible stock

EXPERTCUT 106 LER | PER

Paper, min.	70 g/m ²	.004 in
Carton or solid board, up to	2,000 g/m ²	.060 in
Corrugated board, up to	4 mm	.160 in

Capability

Sheet size, max.	1,060 x 760 mm	41.73 x 30 in
Sheet size, min	400 x 350 mm	15.74 x 13.78 in
Production speed, up to	9,000 s/h	9,000 s/h
- with option SPEED PLUS	9,500 s/h	9,500 s/h
Cutting force, up to	2.6 MN	286 US ton

Die-cutting

With gripper margin, max.	1,060 x 746 mm	41.73 x 30 in
Embossing size, max.	1,060 x 730 mm	41.73 x 28.74 in
Gripper margin	9 - 17 mm	.35 - .66 in
Height of cutting rules	23.8 mm	.94 in

Pile height

Feeder, max.	1,820 mm	71.65 in
Feeder, max. with non-stop, manual	1,520 mm	59.84 in
Delivery, max.	1,550 mm	61,02 in

EXPERTCUT 106 LER | PER

- > At a glance
- > Packaging market
- > Benefits and features
 - > 1–3
 - > 4–6
 - > BOBST technology
- > Specifications
 - > Measurements
 - > Technical information
- > Related products
- > Services
 - > General services
 - > BOBST Connect
 - > TooLink
 - > Digital Inspection Table
 - > Tooling

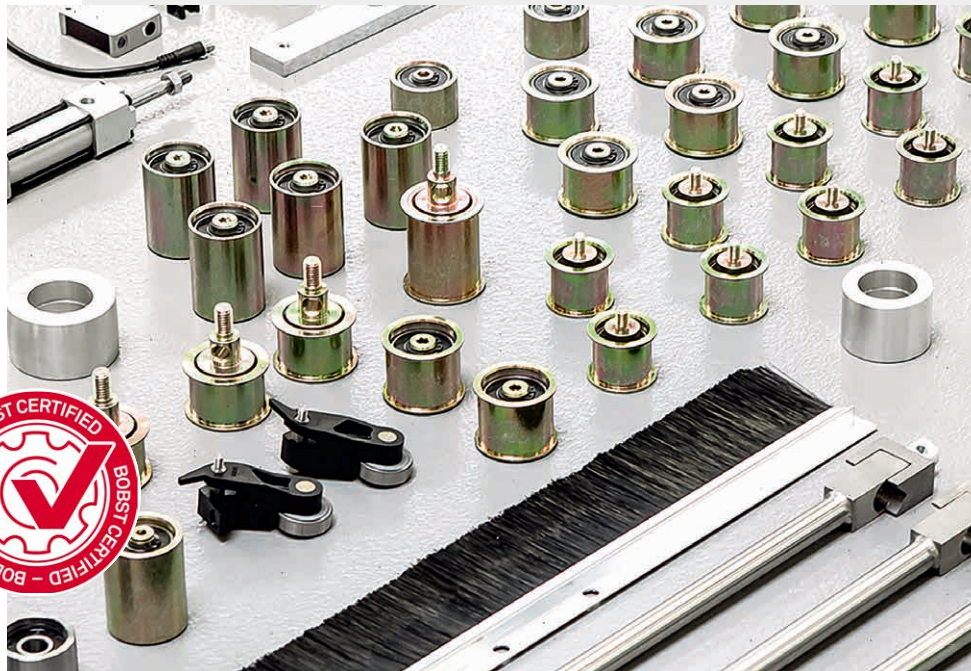
REQUEST CONSULTING

 Print responsibly

Data is not binding.
 Non-contractual pictures.
 The manufacturer reserves the right to make modifications without notice.
 © BOBST SA 2024
 BUPC-ECT106-102024

Maintaining excellence

Expert services for all your equipment.
Improve your processes, boost your productivity and enhance your expertise with a complete range of services from BOBST.



Maintenance Plus

- Scheduled maintenance with BOBST certified technicians
- Preventative intervention, maximizing machine uptime
- Optimum performance over the equipment lifetime

[> WATCH VIDEO](#)

Approved parts and logistics

- BOBST Original and Certified parts, and consumables
- Quality assurance, and extended maintenance intervals
- Worldwide distribution, and full availability where and when you need it

[> LEARN MORE](#)

Machine upgrades

- Additional features, configured for your machine
- Enhanced functionality, connectivity and capability
- Future-proofing your investment, maintaining competitive advantage

[> LEARN MORE](#)

EXPERTCUT 106 LER | PER

- > At a glance
- > Packaging market
- > Benefits and features
 - > 1-3
 - > 4-6
 - > BOBST technology
- > Specifications
 - > Measurements
 - > Technical information
- > Related products
- > Services
 - > General services
 - > BOBST Connect
 - > ToolLink
 - > Digital Inspection Table
 - > Tooling

Print responsibly

Data is not binding.
Non-contractual pictures.
The manufacturer reserves the right to make modifications without notice.
© BOBST SA 2024
BUPC-ECT106-102024

Digital age manufacturing happening with BOBST Connect

BOBST Connect is an end-to-end, user-centric digital platform that enhances and increases your packaging productivity. It's designed to help you make the most of the data your machine generates, improving efficiency across your value chain.

As well as exceptional data insights, BOBST Connect helps to orchestrate and improve your whole production process, from your PDF to the finished product and quality report. It brings data and digital services together in one fully connected platform, with machine insights and expertise built in.

All of this is available to you as part of BOBST Connect Essential, the first subscription level that you receive when you purchase a new BOBST machine.



Performance analysis

- Production insights, including interaction of OEE components
- Identify and eliminate performance gaps

Accurate reporting

- Meaningful insights on OEE and downtime
- Accurately measure target speed and quality losses
- Trend analysis over time

Progress indicator

- Highlights extensive production deviations
- Empowers timely interventions

Remote assistance

- Priority access to technical specialists
- Video with Augmented Reality expert support based on real-time data
- Available 24/7 (optional)

Shift management

- Optimize planning time
- Deliver overall resource efficiency

EXPERTCUT 106 LER | PER

- > At a glance
- > Packaging market
- > Benefits and features
 - > 1-3
 - > 4-6
 - > BOBST technology
- > Specifications
 - > Measurements
 - > Technical information
- > Related products
- > Services
 - > General services
 - > BOBST Connect
 - > TooLink
 - > Digital Inspection Table
 - > Tooling

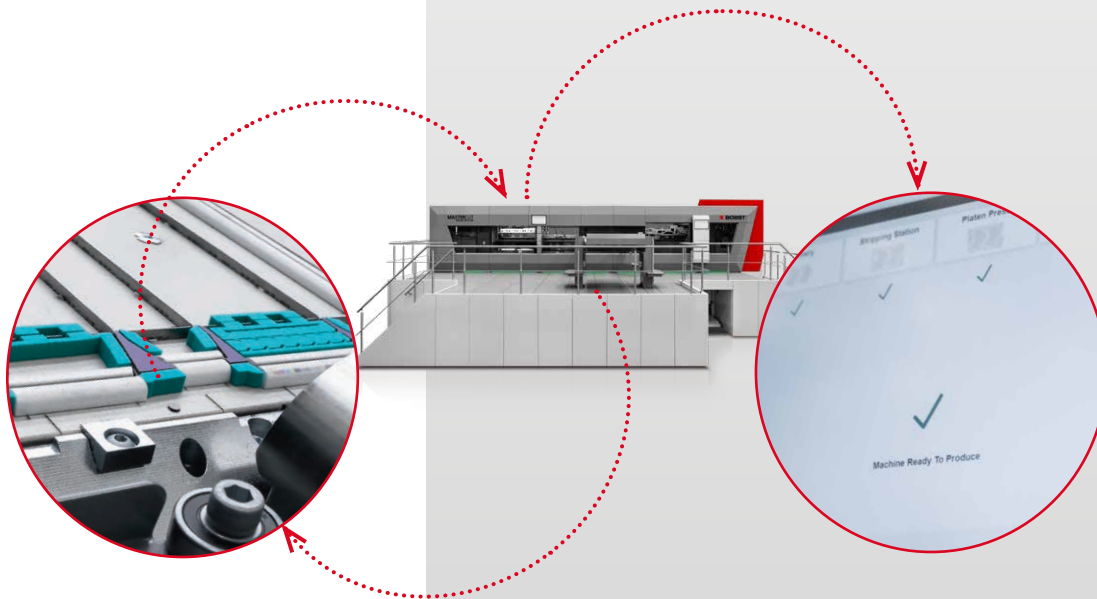
 Print responsibly

Data is not binding.
Non-contractual pictures.
The manufacturer reserves the right to make modifications without notice.
© BOBST SA 2024
BUPC-ECT106-102024

Digital technology for smarter converting

TooLink brings converting into the digital world. It is the new platform that connects your machines and tooling, and brings together your entire converting process to transform production flexibility, job turnaround times, and overall productivity.

A BOBST die-cutter can be data-chipped with TooLink, creating a unique digital ID that enables instant recognition through your machine HMI, and provides a production-ready job recipe. TooLink helps to simplify and automate the production process, putting you ahead of the curve for smart and more sustainable converting.



Extensive benefits

- Saving up to 15 minutes in job changeover times, increasing efficiency and flexibility
- More consistency and continuity in the job recipe management for better product quality
- Fewer setup adjustments for increased cost-efficiency and sustainability

Technology for the future

- Industry-leading digital technology
- 2 sets of > High Performance Tooling - including TooLink chips - for machines with blanking
- Ready for BOBST Connect platform, allowing an end-to-end process overview, for complete production process management and optimization

[> LEARN MORE](#)

EXPERTCUT 106 LER | PER

- > At a glance
- > Packaging market
- > Benefits and features
 - > 1-3
 - > 4-6
 - > BOBST technology
- > Specifications
 - > Measurements
 - > Technical information
- > Related products
- > Services
 - > General services
 - > BOBST Connect
 - > TooLink
 - > Digital Inspection Table
 - > Tooling

Print responsibly

Data is not binding. Non-contractual pictures. The manufacturer reserves the right to make modifications without notice. © BOBST SA 2024 BUPC-ECT106-102024

Transforming the quality control process



The **Digital Inspection Table Folding Carton 106** enables a fully digital and paperless quality control process with instantly projected digital overlays. Quality processes across printing, cut to print, creasing, patching, hot foil stamping, Braille, embossing and quality reporting are improved. Work smarter and faster, with productivity boosted by a reduction in makeready times and errors.

Extensive benefits

Improving profitability and productivity

- Reducing expensive recalls and reruns
- Cutting makeready time
- Data driven and continuous production improvements and quality

Digital Quality Control

- Fast, accurate, predictable and reliable quality
- Impactful, data-driven insights drive improvements

- Optimize manual processes with digital workflows
- Significant savings, reducing costs and increasing sustainability

Customer confidence

- Deliver consistent high quality
- A step closer to delivering zero-fault packaging to your customers
- Maximize relationships with new and existing clients

[> LEARN MORE](#)

EXPERTCUT 106 LER | PER

- > At a glance
- > Packaging market
- > Benefits and features
 - > 1-3
 - > 4-6
 - > BOBST technology
- > Specifications
 - > Measurements
 - > Technical information
- > Related products
- > Services
 - > General services
 - > BOBST Connect
 - > TooLink
 - > Digital Inspection Table
 - > Tooling

 Print responsibly

Data is not binding.
Non-contractual pictures.
The manufacturer reserves the right to make modifications without notice.
© BOBST SA 2024
BUPC-ECT106-102024

Full tooling process optimization

In this challenging market, great tooling provides the consistency that you and your customer need, from the first to the last box of an order. BOBST offers the most advanced tools and equipment for die-making and converting processes so you can exceed customer quality and turnaround expectations, all while maximizing uptime and profitability.



For more information on advanced tooling and die-making products, please contact our experts.

[> LEARN MORE](#)

World-class die-cutting

- Forward thinking die-making equipment and software
- Shorter lead times without compromising quality
- Create exceptionally precise tooling for every converting process

Certified Die-Makers

The Certified Die-Makers Program supports and promotes world-class local die-makers. Choosing a certified die-maker guarantees the best local tooling solutions, with BOBST supporting the ongoing innovation, digitalization and quality improvements of these specialists.



Enhanced converting

- Industry-leading range of equipment
- Made for all cutting, stripping and blanking stations
- Shortens set-up and changeover times

EXPERTCUT 106 LER | PER

- > At a glance
- > Packaging market
- > Benefits and features
 - > 1-3
 - > 4-6
 - > BOBST technology
- > Specifications
 - > Measurements
 - > Technical information
- > Related products
- > Services
 - > General services
 - > BOBST Connect
 - > TooLink
 - > Digital Inspection Table
 - > Tooling

Print responsibly

Data is not binding. Non-contractual pictures. The manufacturer reserves the right to make modifications without notice. © BOBST SA 2024 BUPC-ECT106-102024

Versatile, precise and powerful

WWW.BOBST.COM/EXPERTCUT-106-LER-PER



EXPERTCUT 106 LER | PER

- > At a glance
- > Packaging market
- > Benefits and features
 - > 1-3
 - > 4-6
 - > BOBST technology
- > Specifications
 - > Measurements
 - > Technical information
- > Related products
- > Services
 - > General services
 - > BOBST Connect
 - > TooLink
 - > Digital Inspection Table
 - > Tooling

**REQUEST
CONSULTING**

 Print responsibly

Data is not binding.
Non-contractual pictures.
The manufacturer reserves
the right to make
modifications without notice.
© BOBST SA 2024
BUPC-ECT106-102024